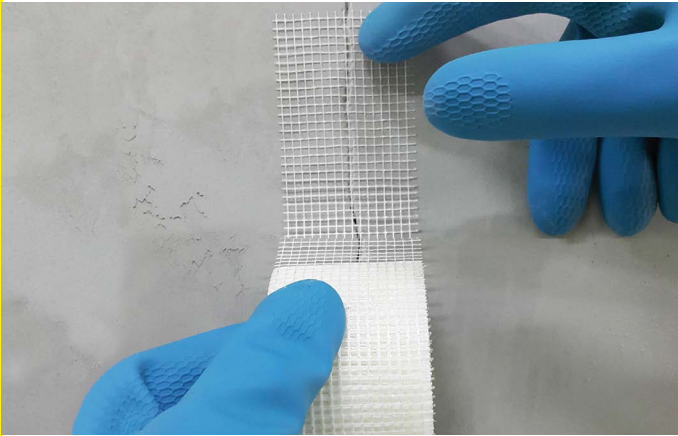




## Complimentaries to waterproofing products



Self-adhesive fiberglass mesh



### webertape fibermesh 5



Increase bonding of waterproof or skim coat to the substrates



Self-adhesive makes it easy to use Repair and reinforce cracks and joints



Repair and reinforce cracks and joints



Joining between 2 pieces of ceiling and drywall



Joining between 2 pieces of different material



Give stronger bond of plaster esp. at the corners of door/window frames



Prevent cracks

**webertape fibermesh 5** is made from high quality woven fiberglass fibers. Self-adhesive makes the product easy to use to increase bonding of either waterproof or skim coat to the substrates. Use to repair cracks, to reinforce joints between 2 pieces of drywall, before the application of waterproof or skim coat. Suitable for both internal and external applications

#### ● RECOMMENDED TO USE WITH

Waterproof products: **weberdry seal**, **weberdry top** and **weberdry tex**

Skim coats: **weberbase skim coat** and **weberbase skim ultra bond**

● **SIZE:** 5 cm wide x 20 m long

● **COLOR:** White

#### ● APPLICATION

- Properly clean the substrate until free from any substances that could prevent adhesion before using **webertape fibermesh 5**.
- Remove any traces of foreign objects or laitance on substrates to ensure the smoothness after sticking

#### ● To fix cracks and damages

- Stick **webertape fibermesh 5** along the crack with 2 inches longer than the crack.

#### ● To joint 2 pieces of dry wall

- Stick **webertape fibermesh 5** on center of the joint.
- Press **webertape fibermesh 5** firmly on substrate, be careful not to fold the tape.
- Make at least 5 cm overlapping.
- Apply waterproof or skim coat according to the recommendation of manufacturer.
- Sanding the surface after the application of skim coat and let the 2<sup>nd</sup> layer dry properly.

#### ● SHELF LIFE AND STORAGE

- Two years after manufacturing date

#### KEY BENEFITS

Key benefits		Size		Self-adhesive	Repair cracks (mm)	Applied with dilatation cracks
Reinforced	Waterproofing	Width	Length (roll)			
√	x	5 cm	20 m	√	0 - 3	x

#### TECHNICAL DATA

Type	Self-adhesive fiber mesh
Color	white
Fiberglass mesh size	2.82 x 2.82 mm.
Weight	60 gsm
Adhesive Coating	Acrylic Latex $\geq 28 \pm 3\%$
Tensile Strength(warp)	$\geq 500$ N/50 mm
Tensile Strength(weft)	$\geq 650$ N/50 mm

Remark: These test results are from laboratory test. They could be slightly different from on-site results because of the differences in applications and conditions